
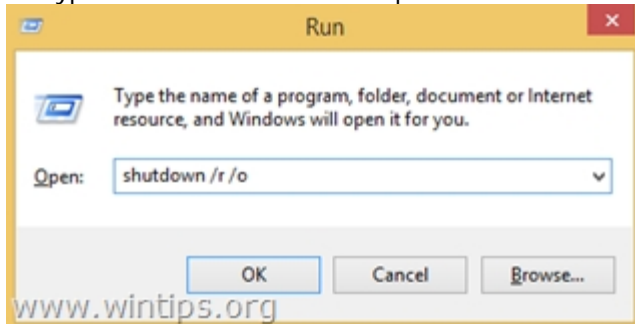


Here are instructions for this process.

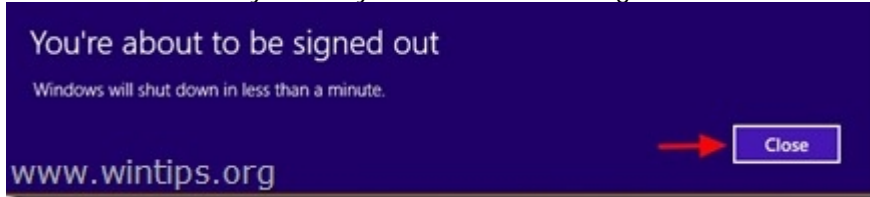
Step 1. Enter in Advanced Options menu.

To enter in Advanced Options menu in Windows 8 & 8.1 OS:

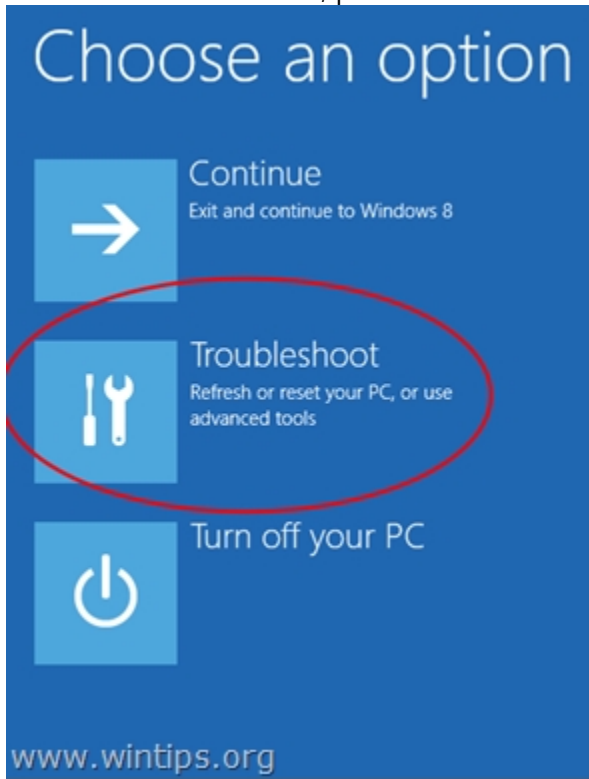
1. Press "**Windows**"  + "**R**" keys to load the **Run** dialog box.
2. Type "**shutdown /r /o**" and press **Enter**.



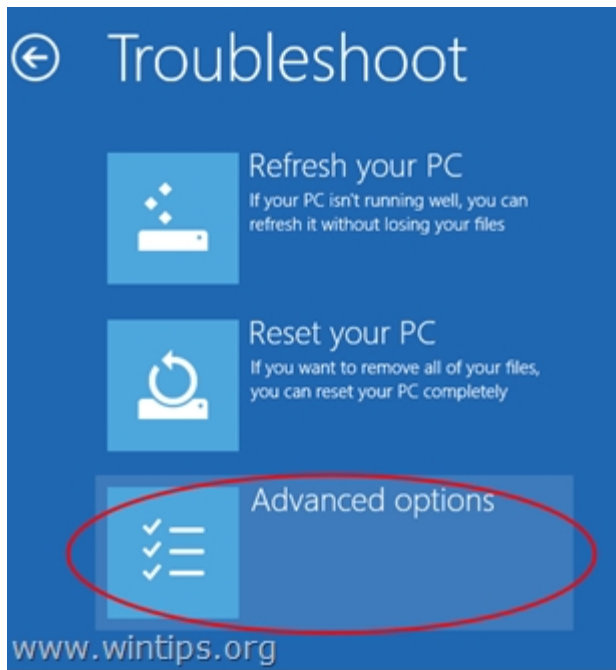
3. Windows informs you that you are about to be signed off. Press "**Close**".



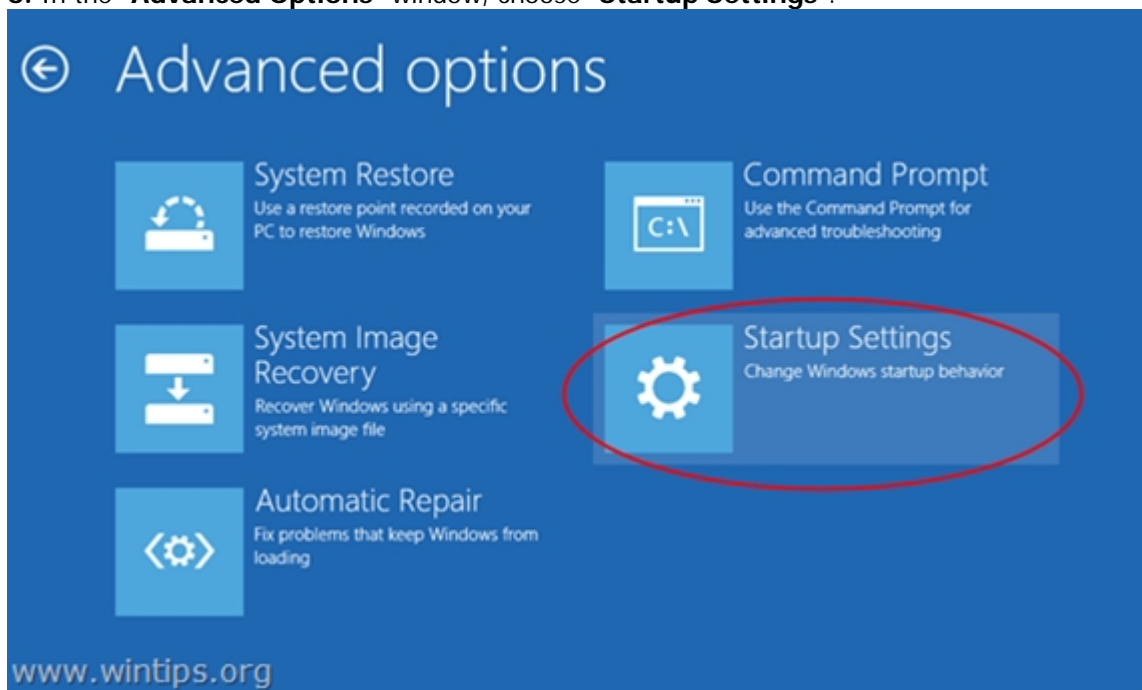
4. When Windows restarts, press "**Troubleshoot**".



5. In the "**Troubleshoot options**" screen, choose "**Advanced options**".



6. In the "Advanced Options" window, choose "Startup Settings".



7. In "Startup Settings" screen, click "Restart".

← Startup Settings

Restart to change Windows options such as:

- Enable low-resolution video mode
- Enable debugging mode
- Enable boot logging
- Enable Safe Mode
- Disable driver signature enforcement
- Disable early-launch anti-malware protection
- Disable automatic restart on system failure

www.wintips.org

Restart

8. After restart in "Startup Settings" windows, press the "F7" (or the "7") key on your keyboard to "Disable driver signature enforcement".

Startup Settings

Press a number to choose from the options below.

Use number keys or functions keys F1-F9.

- 1) Enable debugging
- 2) Enable boot logging
- 3) Enable low-resolution video
- 4) Enable Safe Mode
- 5) Enable Safe Mode with Networking
- 6) Enable Safe Mode with Command Prompt
- 7) Disable driver signature enforcement
- 8) Disable early launch anti-malware protection
- 9) Disable automatic restart after failure

Press F10 for more options

Press Enter to return to your operating system

www.wintips.org

Your computer will restart again.

9. After the restart, proceed to install your unsigned driver. During the installation procedure, Windows will inform you that can't verify the publisher of this driver software. At this point, ignore the warning message and choose "**Install this driver software anyway**" to complete the installation.

